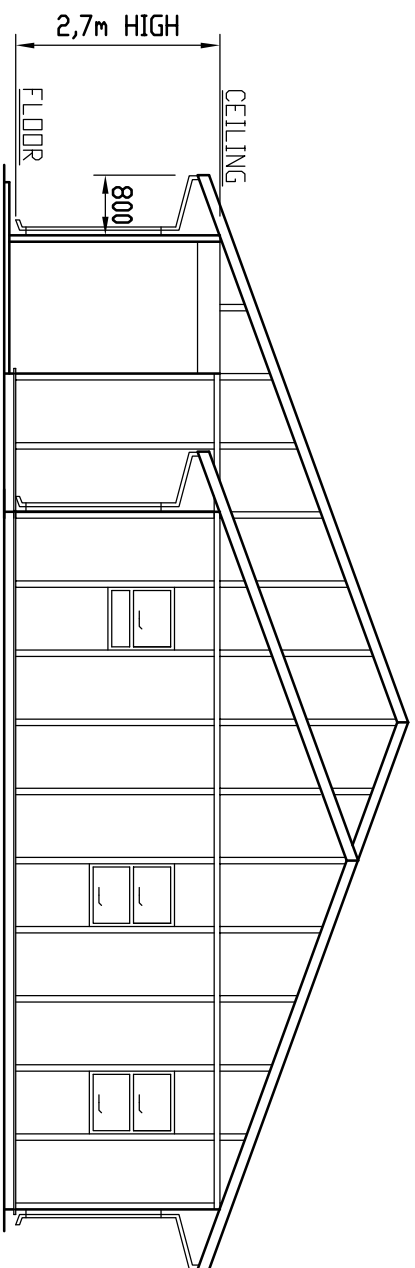
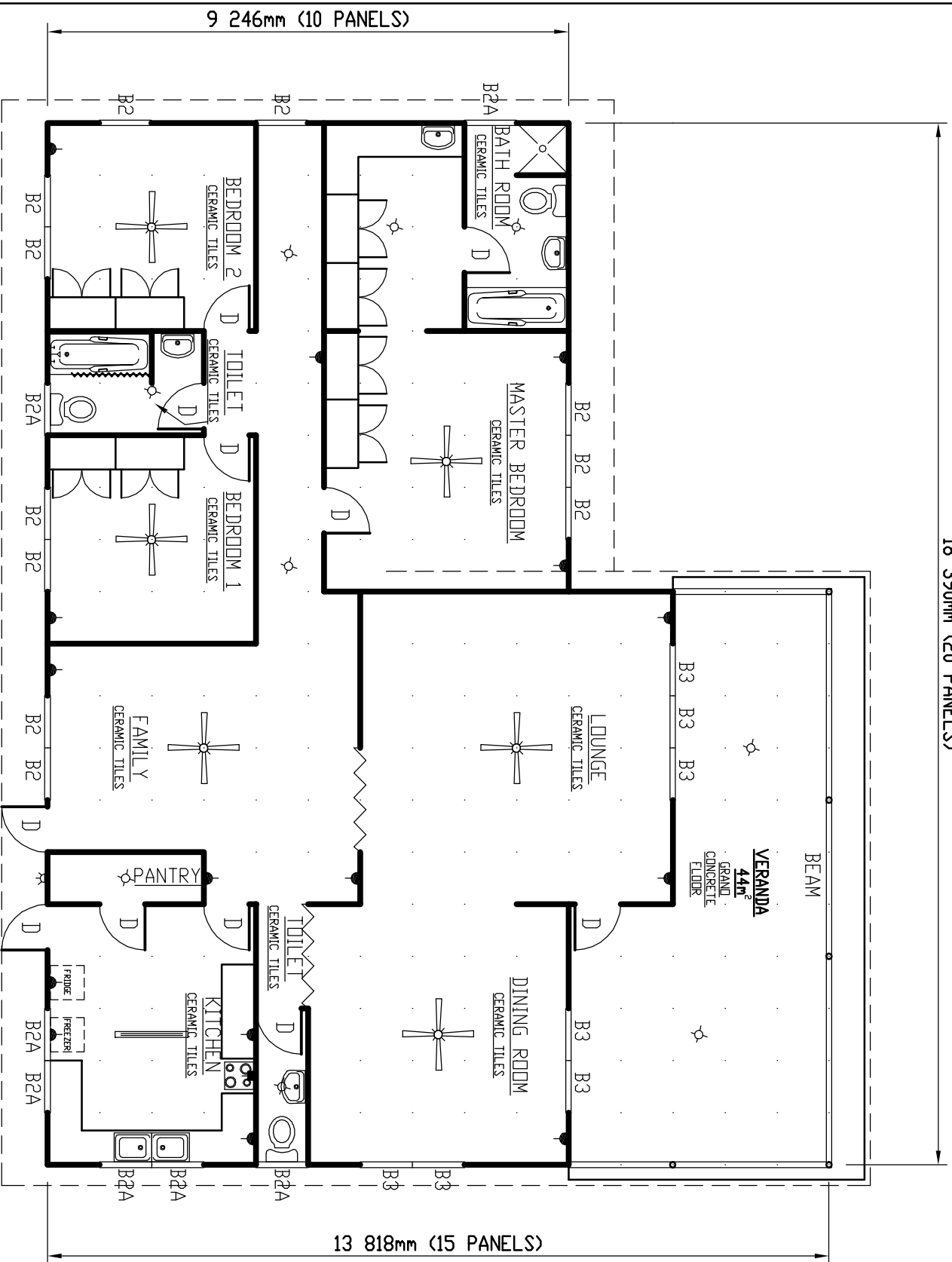


FRONT ELEVATION

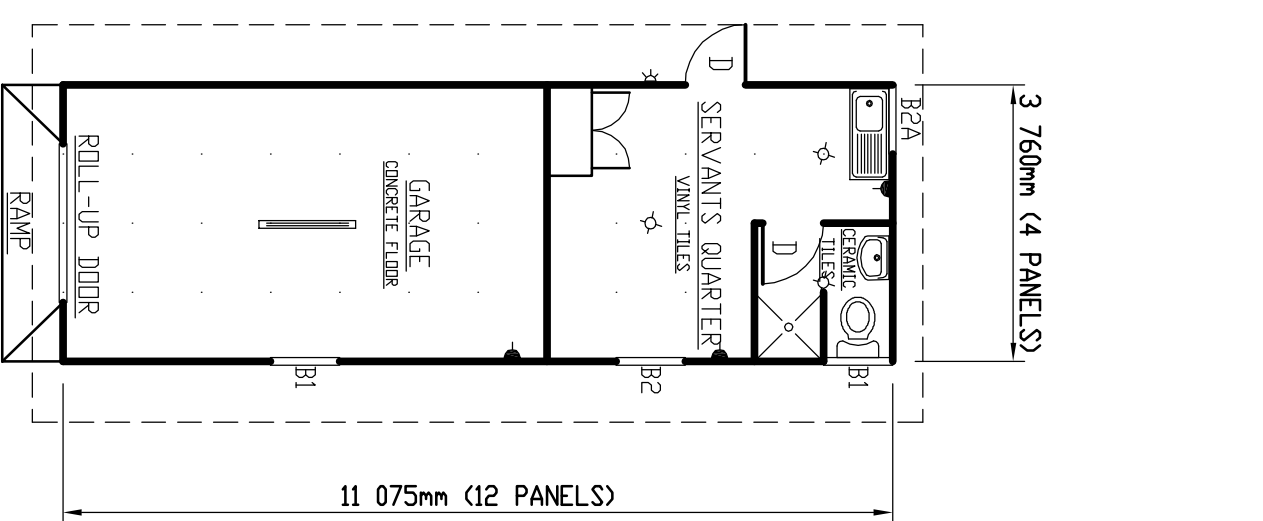
18 390mm (20 PANELS)



LEFT ELEVATION

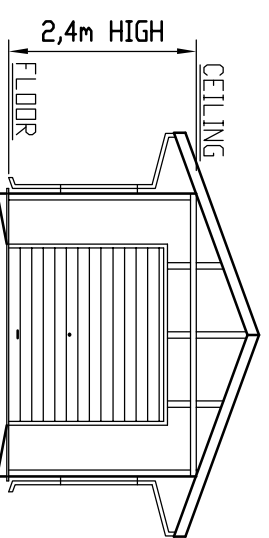


FLOOR = 180m²
 VERANDA = 44m²
 TOTAL = 224m²



PLAN
41.6m²

SCHEDULE	
GALVANIZED WINDOW SIZES:	
B1 807 x 1400	✓
B2A 865 x 1400	✓
B2 1124 x 1400	✓
B3 1688 x 1400	✓
BULKHEAD BARS FOR WINDOWS	✓
FLYSCREENS FOR WINDOWS	✓
DOORS:	
EXTERNAL DOORS SOLID BELIANA DOORS WITH 1 LEVER LOCKS SAFETY -	✓
FLY SCREEN DOORS	✓
INTERNAL DOORS HOLLOW CORE WITH MASONITE WOODGRAIN FINISH	✓
TO BOTH SIDES WITH 2 LEVER LOCK	✓
CONCENTRA DOORS	✓
WALLS:	
EXTERIOR WALL 8 9mm THICK FIBRECEMENT BOARD WITH POLYURETHANE	✓
ON BOTH PANELS INSIDE THE CAVITY	✓
INTERNAL WALLS BRIM FIBRECEMENT WALL PANELS	✓
GALV. BR. ROOF COVER WITH NORMAL OVERLAP (400mm) TO BOTH SIDES	✓
GALV. RIDGINGS, FASCIA, GUTTERS AND DOWN PIPES	✓
44mm VERANDA TO FRONT OF EACH BUILDING	✓
MELAMINE WARDROBES IN BEDROOMS	✓
MELAMINE TABLE TOPS IN KITCHEN	✓
CERAMIC FLOOR COVER THROUGHOUT	✓
WALL TILES 1.5m HIGH IN KITCHEN AND BATH ROOMS	✓
PLUMBING:	
SHOWER	✓
POURCAST W.C., P.V.C. CISTERNS AND HAND WASHBASINS	✓
1000mm FIBREGLASS BATH ON STRAND	✓
1 x 100L WATER HEATERS IN ROOF WITH HOT AND COLD WATER PLUMBING PRESS	✓
DOUBLE BOWL STAINLESS STEEL SINK WITH MELAMINE OTTOMAN CUPBOARDS	✓
ELECTRIC PLUMBING COMPLETE WITH:	✓
CEILING FANS LIGHTS LAMPS SWITCHES FLAT PIN SOCKET OUTLETS AND A	✓
DISTRIBUTION BOARD FOR EACH BUILDING	✓
OPTIONAL EXTRAS:	
1 AIR CONDITIONER UNIT (COOLING ONLY) 2 000 BTU (MASTER BEDROOM)	
1 AIR CONDITIONER UNIT (COOLING ONLY) 1 8 000 BTU (FAMILY ROOM)	



FABRICATED STEEL MFG CO. (PTY) LTD.

F.S.M. MODULAR BUILDING SYSTEM

3 BEDROOM HOUSE

9.2 x 18.4m x (2.7m) HIGH

PLAN

A3-16488/1

SCALE
1 : 100

JOB
T

DATE
30-03-2005

DRAWN
P.G.

REF