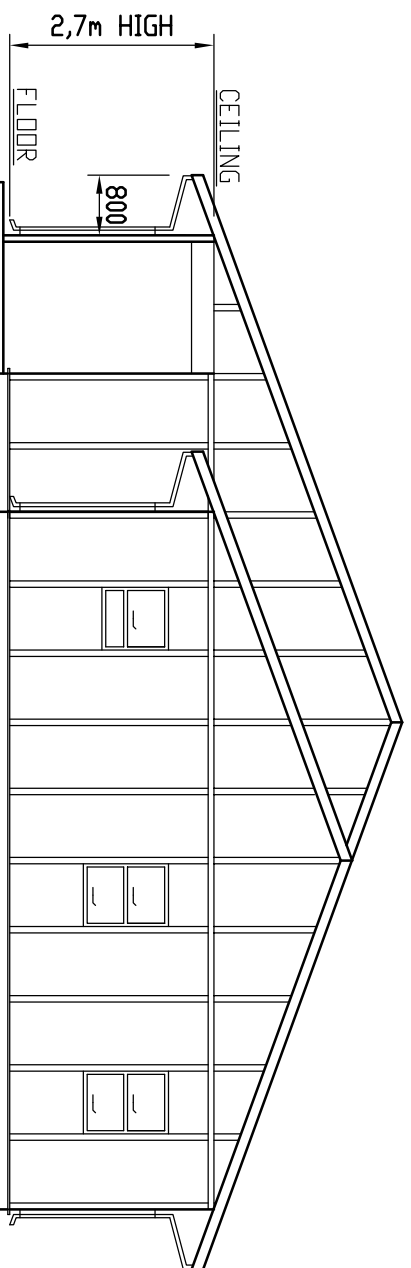
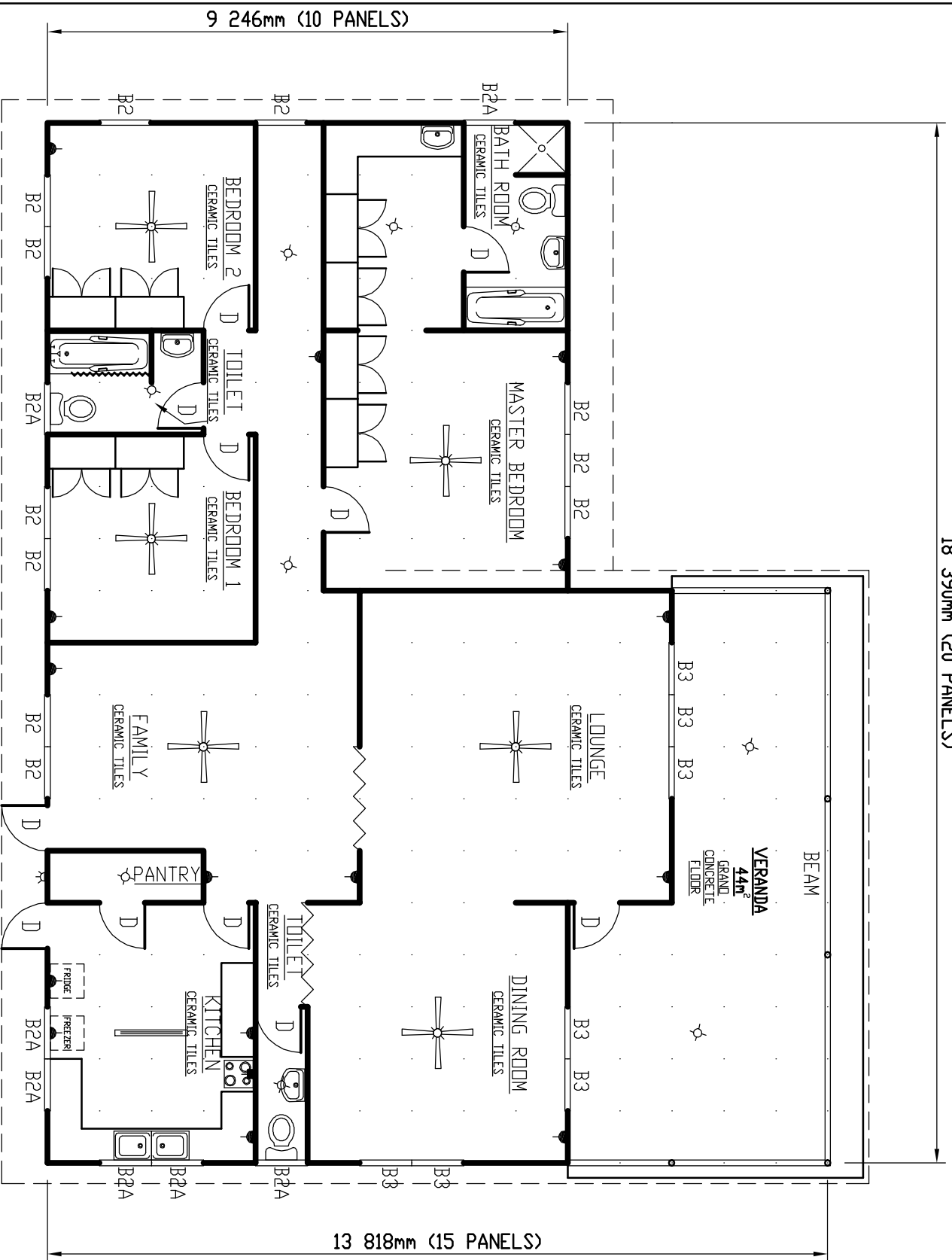


FRONT ELEVATION

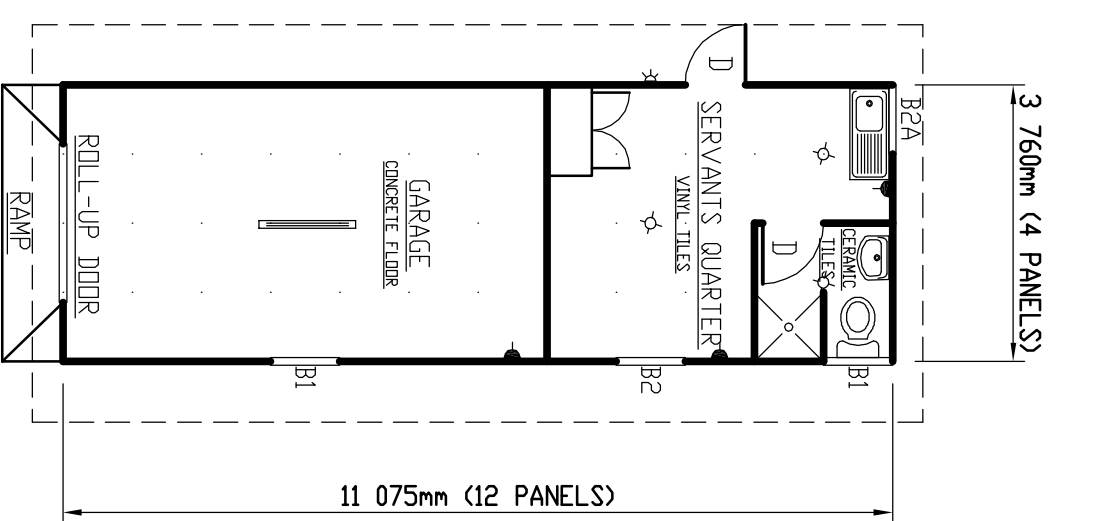
18 390mm (20 PANELS)



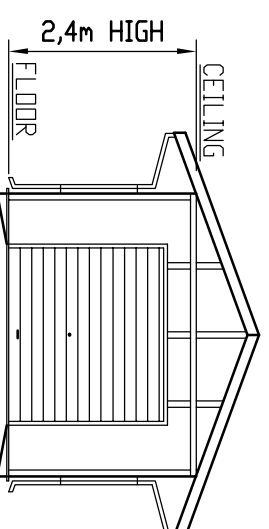
LEFT ELEVATION



FLOOR = 180m<sup>2</sup>  
 VERANDA = 44m<sup>2</sup>  
 TOTAL = 224m<sup>2</sup>



PLAN  
41.6m<sup>2</sup>



SCHEDULE	
GALVANIZED WINDOW SIZES:	
B1 807 x 1400	✓
B2A 865 x 1400	✓
B2 1124 x 1400	✓
B3 1688 x 1400	✓
BULKHEAD BARS FOR WINDOWS	✓
FLYSCREENS FOR WINDOWS	✓
DOORS:	
EXTERNAL DOORS SOLID BELIANA DOORS WITH 1 LEVER LOCKS SAFETY -	✓
FLY SCREEN DOORS	✓
INTERNAL DOORS HOLLOW CORE WITH MASONITE WOODGRAIN FINISH	✓
TO BOTH SIDES WITH 2 LEVER LOCK	✓
CONCENTRA DOORS	✓
WALLS:	
EXTERNAL WALL 80mm THICK FIBRECEMENT BOARD WITH POLYSTYRENE	✓
ON BOTH PANELS & INSIDE THE CAVITY	✓
INTERNAL WALLS BRIM FIBRECEMENT WALL PANELS	✓
GALV. BR. ROOF COVER WITH NORMAL OVERHANG (400mm) TO BOTH SIDES	✓
GALV. RIDGINGS, FASCIA, GUTTERS AND DOWN PIPES	✓
44mm VERANDA TO FRONT OF EACH BUILDING	✓
HELMLINE WARDROBES IN BEDROOMS	✓
HELMLINE TABLE TOPS IN KITCHEN	✓
CERAMIC FLOOR COVER THROUGHOUT	✓
WALL TILES 1.5m HIGH IN KITCHEN AND BATH ROOMS	✓
PLUMBING:	
SHOWER W/C, PVC CISTERNS AND HAND WASHBASINS	✓
1000mm FIBREGLASS BATH ON STRAND	✓
1 x 100L WATER HEATERS IN ROOF WITH HOT AND COLD WATER PLUMBING PRESS	✓
DOUBLE BOWL STAINLESS STEEL SINK WITH HELMLINE OTTOMAN CUPBOARDS	✓
ELECTRIC WARENESS COMPLETE WITH:	✓
CEILING FANS LIGHTS LAMPS SWITCHES FLAT PIN SOCKET OUTLETS AND A DISTRIBUTION BOARD FOR EACH BUILDING	✓
OPTIONAL EXTRAS:	
1 AIR CONDITIONER UNITS (COOLING ONLY) 2.000 BTU (MASTER BEDROOM)	
1 AIR CONDITIONER UNITS (COOLING ONLY) 18 000 BTU (FAMILY ROOM)	



FABRICATED STEEL MFG CO. (PTY) LTD.

F.S.M. MODULAR BUILDING SYSTEM

3 BEDROOM HOUSE

9.2 x 18.4m x (2.7m) HIGH

PLAN

A3-16488/1

SCALE  
1 : 100

JOB  
T

DATE  
30-03-2005

DRAWN  
P.G.

REF